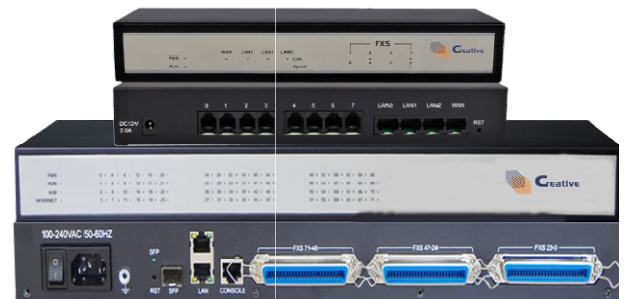


## CXG5000S Series Gateways

### Highlights

- ✓ Cost effective gateway with 8 - 48 FXS Ports
- ✓ Fax over IP (T.38 and Pass-Through)
- ✓ Support IPv4 and IPv6
- ✓ TR069 and SNMP •
- ✓ Multiple Codec: G.711A/U,G.723.1,G.729A/B, AMR, G.726 etc.
- ✓ Fully compatible with leading IMS/NGN, SIP based IP telephony system
- ✓ Dual (1+1) SIP Server Option
- ✓ Self Survivability



CXG5000S Series is a multi-functional analog FXS gateway offering seamless connectivity between IP- based SIP telephony system and legacy analog telephones (POTS), FAX machines and PBX systems. The device offers 8/16/24/32/48 FXS ports, fax over IP and flexible dial plans. It is ideally suited for small and medium businesses, call centers and multi-location environments that need VoIP services. CXG5000S Series supports the standard SIP protocol and it's compatible with leading IMS/NGN platforms and SIP-based IP telephony systems.

## Overview

CXG5000S Series is available in 8/16/32/48 FXS ports variant and is one of the advanced designed Voip gateway by Creative. It support T.38 real time FAX and T.30 FAX with G.711. Fully compatible with SIP industry standard and able to interoperate with any other SIP devices and IP-PBX software available in the market

### Management

- Firmware Upgradeable
- Web Management Interface
- Telnet
- Configuration Backup/Restore
- CDR
- IVR-driven Management Interface
- Local and Remote Syslog (RFC3164)
- Auto Provisioning
- Syslog
- SNTP Time Synchronization
- Multi User Level
- Ping/Tracert Tes
- SNMP v1/v2/v
- TR069

### Audio (FAX & Voice)

- G.711A/U law, G.723.1, G.729A/B,
- G.726,iLBC
- Silence Suppression
- Comfort Noise Generation(CNG)
- Voice Activity Detection(VAD)
- Echo Cancellation(G.168), with up to 128ms
- Adaptive (Dynamic) Jitter Buffer
- Hook Flash
- Programmable Gain Control
- T.38/Pass-through
- Modem/POS
- DTMF mode: Signal/RFC2833/INBAND
- VLAN 802.1P/802.1Q
- Layer3 QoS and DiffServ

### Call Features

- 3-Way Conference
- Music on hold
- DTMF mode: In-band, RFC2833 and SIP INFO
- Call Hold
- Call Forwarding
- Call Mute
- Call Transfer
- Call Waiting
- Speed Dial
- Caller ID and CWCID
- Hotline
- Dial Plan
- Black List
- Call Log

### Protocols

- SIP V2 (RFC 3261,3262,3263,3264)
- Backward Compatible with RFC2543
- Session Timer (RFC4028)
- SDP (RFC2327)
- RTP/RTCP (RFC1889 and RFC1890)
- NAPTR for SIP URI Lookup (RFC2915)
- STUN (RFC 3489)
- ARP/RARP (RFC 826/903)
- SNTP (RFC 2030)
- DHCP/PPPoE
- PPTP/L2TP VPN/ OpenVPN
- HTTP Server for Web Management
- TFTP/HTTP/HTTPS for Auto Provisioning
- DNS/DNS SRV (RFC1706 and RFC 2782)
- NAT/NAPT Router function

- PPTP/L2TP VPN
- SIP proxy redundancy
- IP conflict detection

### I/O Interfaces

- 1 RJ-45 for WAN port (Ethernet 1000 Base-T)
- 2 RJ-45 for LAN port (Ethernet 1000 Base-T)
- 8/16/32/48 RJ-11 for FXS ports

### Network

- Static / Dynamic IP,
- PPPoE
- DHCP Client
- IPv4/IPv6
- TCP, UDP, TFTP, FTP, ARP, RARP,
- Ping, NTP, SNTP, HTTP/HTTPS, DNS
- Ping / Tracert

.....

### Ordering Information

Part Code	Description
CXG5008S	8 Port FXS Gateway
CXG5016S	16 Port FXS Gateway
CXG5024S	24 Port FXS Gateway
CXG5032S	32 Port FXS Gateway
CXG5048S	48 Port FXS Gateway

### Software Features

- Hunting Group
- Routing Rules Based Prefixes
- Dual (1+1) SIP Server Option
- Self Survivability / Failback

### Power

- AC/DC adapter (CCS1008 & CCS 1016)
- AC Input: 100~240V, 50~60Hz

### Environmental/ Compliance

- Operation Temperature: 0~50 Degree C
- Storage Temperature: -20~ 80 Degree C
- Relative Humidity: 10%~90% No Condensing
- Compliance: CE, FCC, UL, RoHS
- EMC: 47 CFR FCC Part 15: 2015 Subpart-B (Class-A)

**Creative** is a Leading state of the art technology based VoIP & Unified Communication System Developer and Provider and focused on research & Innovation , Creative offers global standard Embedded SIP-PBX , VoIP Gateway and Telephony application software to cater SoHO, SME, SMB and Enterprise Communication requirements.

Email: [info@creativetele.in](mailto:info@creativetele.in)

Phone: +91-54123-56941

Web: [www.creativetele.in](http://www.creativetele.in)